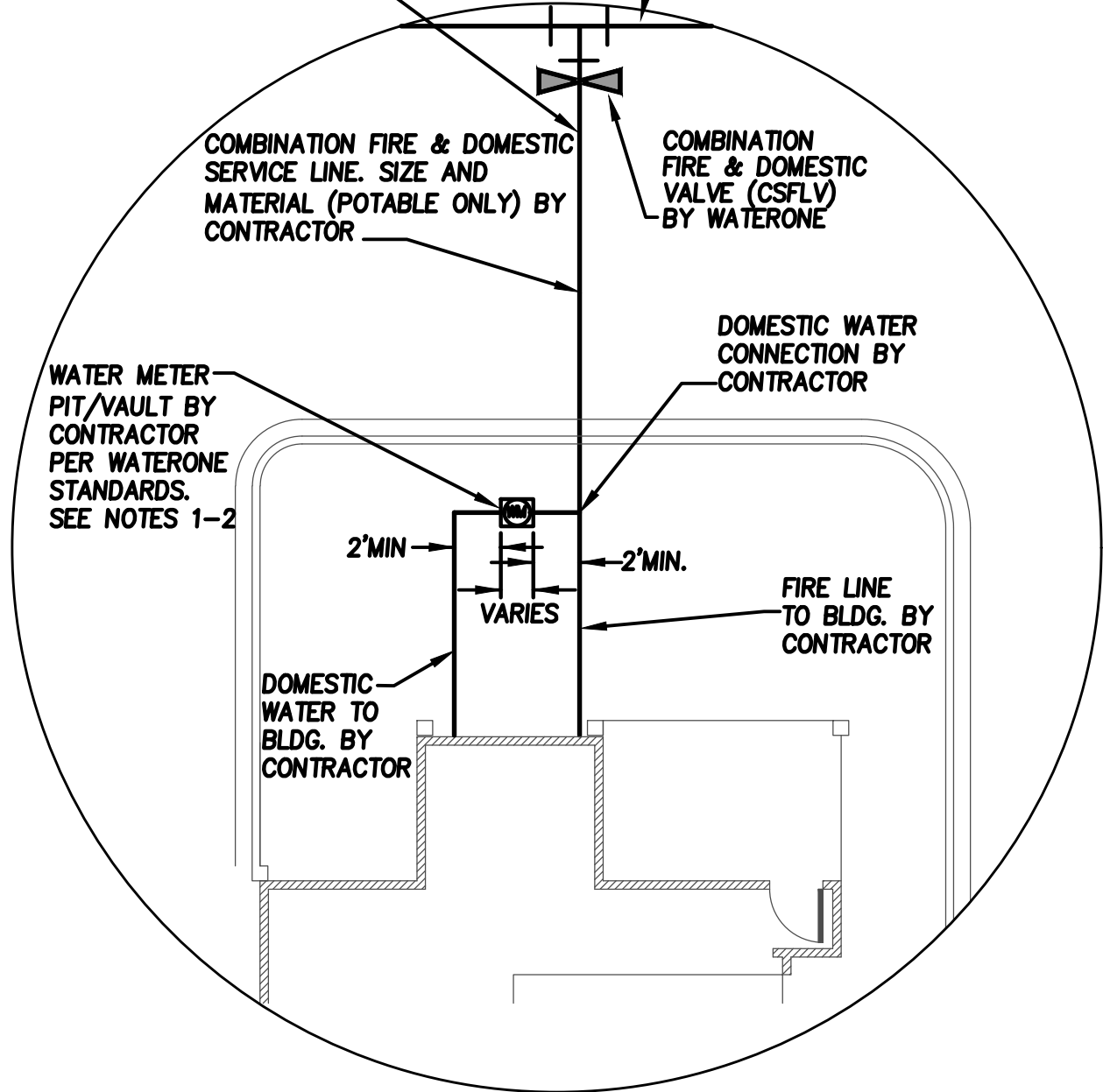


CONNECTION TO CSFLV BY CONTRACTOR SHALL BE INSPECTED & APPROVED BY WATERONE BEFORE BACKFILLING.




NO SCALE

NOTES:

1. WATER METER PIT/VAULT SHALL BE PLACED A MINIMUM OF 3' BOC ON PRIVATE PROPERTY AS CLOSE TO THE R/W LINE AS POSSIBLE.
2. WATER METER PITS/VAULTS SHALL HAVE 2' CLEARANCE IN ALL DIRECTIONS.

H:\WATERONE\IND\SHARES\STANDARDS\ENGINEERING STANDARDS\COMPONENT DRAWINGS\ES-1815 (COMBINATION FIRE AND SERVICE LINE VALVED).dwg

MANAGER OF DISTRIBUTION ENGINEERING INITIALS: _____ DATE: _____	 Water District No.1 of Johnson County	COMBINATION DOMESTIC & FIRE SERVICE CONNECTION	
MANAGER OF DISTRIBUTION WATER QUALITY INITIALS: _____ DATE: _____			
MANAGER OF CONSTRUCTION MAINTENANCE VALVING & SERVICE INITIALS: _____ DATE: _____			
DIRECTOR OF DISTRIBUTION INITIALS: _____ DATE: _____			
		DRAWN BY: WRY DATE: 03-27-13 REVISED BY: CHH DATE: 09-24-2018	DWG NO. ES-1815